



📍 11a The Bassetts, Box, Corsham, Wiltshire, SN13 8ER

🏠 Price Guide £650,000

Situated on the outskirts of the lovely village of Box we are delighted to offer for sale this substantial 3 bedroom detached bungalow with detached double garage and sold with no onward chain.

- Sizeable Detached Bungalow
- 3 Bedrooms
- 2 Large Reception Rooms
- Situated In A Large Plot
- Double Detached Garage With Potential To Convert stp
- Front Garden With lovely Views Over Box Valley
- Located At The End Of A Small Cul De Sac
- No Onward Chain

🏡 Freehold

🏠 EPC Rating C



Situated on the outskirts of the lovely village of Box we are delighted to offer for sale this substantial 3 bedroom detached bungalow with detached double garage and sold with no onward chain. You enter the accommodation into an external porch with plenty of storage, this leading to the sizeable kitchen which is well equipped with a number of wall and base, granite work tops, tiled flooring and built in appliances which include a large fridge, dishwasher and dual fuel range cooker. The bedroom accommodation is to one end of the bungalow and the living area to the other. The bedrooms are situated down a small flight of steps from the kitchen into the main hallway which has the family bathroom and fitted T.V installed, shower room and airing cupboard off. The two bedrooms to the front are both double with the third being a good sized single. As we return to the kitchen there is a useful utility room with space for the washing machine and tumble dryer and a further door to the large main living room which has dual aspect windows front and rear, an internal sound system and attractive wood flooring which continues into the sun room/dining room. The room itself is a sun trap and is partly open plan to the living room with windows to the front and both sides and French doors to the front. The property is double glazed throughout and warmed by a mains gas fired central heating system. Externally there is ample parking to the front, accessed from The Bassetts through large double gates and is laid entirely to block paving. In front of the parking area are steps to an attractive patio and separate lawned area, both raised above the bungalows roof and affording beautiful views over Box Valley. The imposing double garage has a cavity wall and all mains connections and could convert to a sizeable annex subject to planning. A path leads all around the bungalow which is enclosed by hedgerow providing security and a good degree of privacy.

Situation

Box is a popular Wiltshire village offering an excellent range of local facilities which include post office, general stores, newsagent, chemist, library, doctors surgery, public houses, church and local primary school. The Georgian City of Bath (circa 6 miles) offers a more comprehensive range of facilities. There are mainline railway links to London, Bristol and Swindon from Bath and Chippenham. as well as main road bus links and many gorgeous country walks.

Property information

Council Tax Band: F

E.P.C Rating: C

Mains Services

Freehold



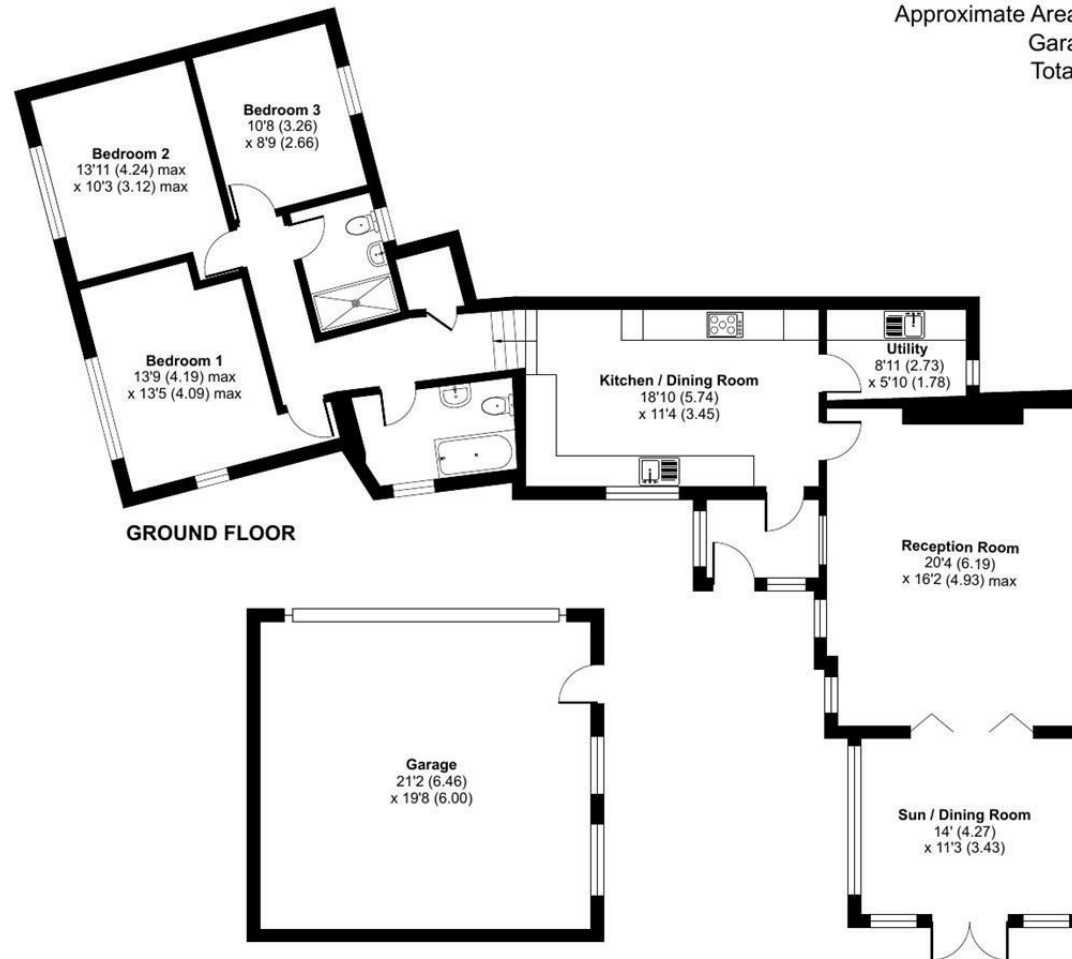
The Bassetts, Box, Corsham, SN13

Approximate Area = 1426 sq ft / 132.4 sq m

Garage = 417 sq ft / 38.7 sq m

Total = 1843 sq ft / 171.1 sq m

For identification only - Not to scale



Floor plan produced in accordance with RICS Property Measurement 2nd Edition, Incorporating International Property Measurement Standards (IPMS2 Residential). © nitchecom 2025. Produced for Strakers. REF: 1361595

Disclaimer These particulars, whilst believed to be accurate are set out as a general outline only for guidance and do not constitute any part of an offer or contract. Intending purchasers should not rely on them as statements of representation of fact, but must satisfy themselves by inspection or otherwise as to their accuracy. No person in this firm's employment has the authority to make or give any representation or warranty in respect of the property. All measurements and distances are approximate only. Your home is at risk if you do not keep up repayments on a mortgage or other loan secured on it.